



**LONG ISLAND
HEAD START**



**Annual 20
Report 22**

Board Chairman & Chief Executive Officer Message

Greetings from Donnee & Debby,

As we end the 2021-2022 program year, we are proud to celebrate another successful year of Head Start and Early Head Start services in Suffolk County. Long Island Head Start staff, children, and parents have done an amazing job of providing high quality services to the children and families in our Head Start, Early Head Start, and Early Head Start-Childcare Partnerships programs.

During this past program year, Long Island Head Start has once again emerged out of a second year of navigating the COVID-19 pandemic and remains one of the strongest Child Development and Family Support agencies on Long Island. Our parents, community and staff have all demonstrated flexibility, resiliency, and commitment in the face of overwhelming challenges. While none of us could have anticipated the circumstances with which we were forced to adjust, we are very proud of what everyone has accomplished by working together.

Despite the challenges we now face with the Coronavirus being a part of our daily lives, our parents and staff have found new and innovative ways to embrace the changes that are a very real part of our daily lives. We want to commend the efforts of our parents in teaming up with staff and community partners in reaching the family goals you embarked on when you started our program... this indeed is quite an accomplishment!

We want to also thank all of our community supporters and organizations for coming together with us this year to ensure that

our families received all of the supplies, food, and donations that we needed to help them thrive... your generosity is truly a blessing for so many of the children that we serve in a very different world.

We applaud our LIHS staff for their efforts in ensuring that distance learning and family engagement were delivered seamlessly in all of our HS & EHS centers across the county. Your tireless efforts and dedication during these difficult times is no doubt a heartfelt testament to your commitment to our agency's mission.

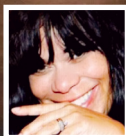
As we enter into the September 2022 school year, we can say with confidence that we will continue to provide high quality comprehensive services to ALL families in our Head Start, Early Head Start centers, and with our Early Head Start - Child Care Partnership daycares throughout Suffolk County.

We often have little control over what happens to us in life, but we do have full control over how we choose to respond and there is no doubt that we have all learned to adapt to our new lifestyle. Thank you again LIHS parents and staff for finding innovative ways to making sure that our children's best beginning will always be a Head Start!

Be safe and stay healthy always...



Terrence D. Goode
Terrence D. Goode
Chairman of the Board



Debrah Everett-Garcia
Debrah Everett-Garcia
CEO/Executive Director

The mission of Long Island Head Start is to provide a comprehensive learning environment to children respectful of their cultures and to assist families in reaching self-sufficiency through the combined efforts of parents, community, and staff.

About Us

L.I. Child and Family Development Services, Inc. dba Long Island Head Start, is a private not-for-profit 501(c)(3) organization. Long Island Head Start offers a variety of service models, depending on the needs of the family. Head Start and Early Head Start programs are based in centers. Some programs offer home-based services that assign dedicated staff who conduct weekly visits to children in their own home and work with the parent as the child's primary teacher.

Over fifty years ago Head Start began as a program for preschoolers. Early Head Start was created to serve Expectant Mothers, infants, and toddlers. Early Head Start programs are available to the family until the child turns 3 years old and is ready to transition into Head Start or another Pre-K program. Just recently, many Early Head Start programs have been funded to partner directly with existing infant and toddler child care programs, resulting in higher quality services to all children enrolled in the child care program. Head Start programs support children's growth and development in a positive learning environment through a variety of services, which include:

Early learning: Children's readiness for school and beyond is fostered through individualized learning experiences. Through relationships with adults, play, and planned and spontaneous instruction, children grow in many aspects of development. Children progress in social skills and emotional well-being, along with language and literacy learning, and concept development.

Health: Each child's perceptual, motor, and physical development is supported to permit them to fully explore and function in their environment. All children receive health and development screenings and nutritious meals. Programs connect families with medical, dental, and mental health services to ensure that children are receiving the services they need.

Family well-being: Parents and families are supported in achieving their own goals, such as housing stability, continued education, and financial security. Programs support and strengthen parent-child relationships and engage families around children's learning and development.

What is Head Start?

Head Start programs prepare the most vulnerable young children to succeed in school and in life beyond school. To achieve this, Head Start programs promote the school readiness of children ages birth to 5 from at-risk families by providing services in core areas of early learning, health, and family well-being while engaging parents as partners every step of the way.

Head Start encompasses Head Start preschool programs, which serve children ages 3-5 years-old, and Early Head Start programs for infants, toddlers, and Expectant Mothers. Head Start services are delivered nationwide through 1,600 agencies which tailor the federal program to the local needs of families in their service area.

Long Island Head Start Child & Family Enrollment

Funded Enrollment

1,268 Head Start Children
1,167 Cumulative HS Enrollment
148 Early Head Start Children

19

Head Start
Centers

3

Early Head Start
Centers

Head Start

78 Head Start Classrooms
1,268 Head Start Children in Full-day Sessions
11.57% Children with disabilities

Early Head Start

64 Center Based Care
64 Home Based Care
20 Expectant Families
10.10% Children with disabilities

59% of children
are from homes
where English
is not the first
spoken language

Community Assessment

The following data has been gathered in order to identify geographic areas of poverty within Suffolk County New York and the specific needs of those living at or below the federal poverty level. The Community Assessment also includes Suffolk County statistics regarding health, nutrition, foster care, homelessness and other childcare options for families living in the county such as Universal Pre-Kindergarten services offered by local school districts.

As of July 2021 there were 1,526,344 people living in Suffolk County according to the 2020 US Census. 5.4% of that population are children under the age of five years. The average poverty rate in Suffolk County is 6.1%. The race/ethnicity breakdown in Suffolk County is as follows:

- White Alone: 84.2%
- Black/African American: 8.8%
- American Indian and Alaska Native: .6%
- Asian: 4.2%
- Native Hawaiian & Other Pacific Islander: .1%
- Two or more races: 2%
- Hispanic/Latino: 20.2%
- Non Hispanic: 66.6%

Towns in Suffolk were ranked according to economically distressed indicators. These indicators include median household income, unemployment rate, % with less than a high school degree, % with no health insurance, % of households receiving SNAP benefits and % below the poverty level. The following chart reveals the top 20 towns in Suffolk County with an overall ranking of all six (6) economically distressed indicators. Long Island Head Start serves children and families in all 20 communities.

Rank	Community	Medium Household Income	Rank	Unemployment Rate	Rank	% w less than High School Degree	Rank	% with no health insurance	Rank	% of households with Food Benefits	Rank	% Below Poverty Level	Rank
1	Greenport Village	\$48,750	2	12.7%	4	17.4%	10	8.6%	23	18.1%	6	18.0%	6
2	Riverhead	\$52,126	3	6.2%	18	22.5%	6	12.6%	9	11.3%	15	14.7%	9
3	Wyandanch	\$59,076	6	6.2%	17	17.3%	11	7.2%	31	26.1%	3	24.5%	2
4	Copliague	\$82,258	28	6.6%	13	17.6%	9	7.9%	28	12.7%	14	11.1%	18
5	North Bay Shore	\$89,275	36	8.6%	8	26.5%	4	8.2%	26	17.0%	7	9.8%	30
6	Mastic Beach	\$72,137	16	5.2%	33	15.1%	17	6.5%	32	18.2%	5	14.1%	11
7	North Amityville	\$75,529	18	4.9%	36	20.1%	8	7.6%	29	14.5%	11	11.3%	17
8	Brentwood	\$82,165	27	3.9%	70	31.0%	1	11.2%	12	13.8%	12	10.9%	22
9	North Bellport	\$75,531	19	3.7%	81	17.3%	12	8.4%	24	16.0%	8	16.4%	7
10	Brookhaven	\$68,884	10	5.2%	32	13.2%	18	4.0%	61	9.1%	22	12.8%	13
11	Bay Shore	\$80,341	24	5.1%	34	15.5%	16	5.5%	42	15.7%	9	9.6%	33
12	Shirley	\$87,242	33	5.4%	28	15.8%	14	4.7%	51	9.9%	19	12.1%	16
13	Calverton	\$55,026	4	4.1%	65	9.7%	32	8.6%	22	6.4%	40	14.3%	10
14	Central Islip	\$74,458	17	3.5%	88	24.5%	5	9.7%	19	14.8%	10	9.1%	37
15	Patchogue Village	\$71,235	14	4.8%	47	10.9%	27	8.2%	27	6.7%	37	10.4%	25
16	Gordon Heights	\$92,548	43	3.9%	72	11.7%	23	9.9%	18	23.7%	4	10.7%	24
17	Riverside	\$42,986	1	0.0%	145	29.9%	2	7.3%	30	26.4%	2	19.6%	5
18	Huntington Station	\$93,400	44	3.8%	76	16.9%	13	10.9%	14	9.3%	21	10.9%	21
19	East Patchogue	\$81,890	26	5.4%	30	11.9%	22	4.0%	62	8.6%	26	9.7%	31
20	Mastic	\$98,811	61	4.9%	37	12.9%	19	5.7%	41	13.3%	13	9.4%	34

The following chart indicates children under five living in poverty within each township in Suffolk County. There are about 7,880 children under five living in poverty in Suffolk County Brookhaven has the highest number of children under five living in poverty with Islip second and Babylon third.

Town	Child Poverty Rate (Birth-18)	Poverty Rate Children <5 yrs	Children <5 yrs living in Poverty
Babylon	10.9%	11.9%	1,386
Brookhaven	10.4%	12.9%	3,114
East Hampton	23%	20.4%	216
Huntington	6%	3.8%	378
Islip	9%	10%	1,934
Riverhead	13%	14.6%	232
Shelter Island	0	0	0
Smithtown	2.7%	1%	53
Southampton	10%	13.5%	420
Southold	16.1%	23.8%	128
Suffolk County	9.1%	10.2%	7,880
New York	19.6%	20.8%	235,510

Community Assessment

The number of Foster Care children in Suffolk County has decreased since 2017.

	2017	2018	2019	2020	2021	difference from 2017-2021
# of Children in Care	568	496	428	428	396	-172
Admissions	342	320	260	236	229	-113
Discharges	347	402	325	238	263	-84

Homelessness

According to a Newsday article on February 20, 2021 Long Island has about 3,800 homeless people, including about 1,650 children, according to a count from early 2020. Of those 3,800 people, 54 adults are “unsheltered” — sleeping outside or in a place unfit for habitation.

Universal Pre-Kindergarten

School districts throughout Suffolk County provide Universal Pre-Kindergarten services to four-year old children in both half day and full day slots. However not every district provides UPK services and not for every four year old in the district. UPK services are usually provided through a lottery system and not according to need. The following chart indicates the number/percentage of children receiving UPK services for the 2020-2021 school year in districts within Long Island Head Start’s major recruiting areas.

School District	Students Served in Half-Day slots	Students Served in Full-Day Slots	% of Students Served
Coplogue	0	162	57%
Amityville	0	137	93%
Wyandanch	0	87	41%
Patchogue/Medford	170	0	44%
William Floyd	320	0	64%
Huntington	0	0	0%
South Huntington	88	0	26%
Bay Shore	1	267	78%
Brentwood	113	446	49%
Central Islip	164	90	55%
Riverhead	185	0	43%
Hampton Bays	31	0	27%
Southampton	35	3	42%
Bridgehampton	0	0	0%
Tuckahoe Commons	0	22	73%
Oysterponds	0	0	0%
Southold	13	0	38%
Mattituck/Cutchogue	28	0	60%

Health/Nutrition

According to US News and World Report Suffolk County ranked 342 out of 500 of the healthiest communities within the United States in 2022. The categories used for the rankings include population health, equity, education, economy, housing, food & nutrition, environment, public safety, community vitality and infrastructure.

Indicators	Suffolk County	US
Population with no health insurance	6.2%	11%
Smoking Rate	13.7%	20%
Life Expectancy	80.9%	77.5%
Adults with frequent mental distress	12.3%	15.8%
Adults in poor or fair general health	14.2%	19.5%
Babies born with low birth weight	7.8%	7.9%
Teen Birth Rate/1000	8.8	20.3
Neighborhood Disparity in Poverty	6.57	6.97
Racial Disparity in Poverty	0.20	0.13
High School Graduation Rate	89.7%	89.4%
Unemployment Rate	8.1%	6.5%
Households spending at least 30% of income on housing	38.1%	22.8%
Overcrowd households	2.2%	1.8%
Population without access to large grocery store	28.5%	21.7%
Obesity Prevalence	26.5%	36.2%
Property Crime Rate/100k	1,510.3	1,673.7
Violent Crime Rate/100k	124.0	204.5

COVID 19 Impacts on the Mental Health of New Yorkers (Study conducted in 2020)

According to a study on Mental Health in 2020 more than half of adult New Yorkers reported symptoms of anxiety and/ or depression in the prior week. That rate is more than triple what was self-reported nationally using similar measures during pre-pandemic periods. The proportion of New Yorkers reporting poor mental health has remained high throughout the pandemic, reaching 37% of adult New Yorkers in 2020. Although all age groups were affected, young adult New Yorkers (ages 18-34 year) reported the highest rates (49%) of poor mental health in October 2020.

Operating in the COVID-19 Pandemic

In direct response to the COVID-19 pandemic, Long Island Head Start quickly regrouped and prepared itself to continue to operate as effectively and efficiently as possible under the circumstances. Here are some of the changes put into place in order for us to continue delivering comprehensive Head Start services:

- Staff Remote Work Policy
- Virtual services provided to children and families
- Covid-19 social distancing protocols
- Secured PPE for the entire agency
- New Staff & Visitor ID Badges
- Installed COVID-19 signage and temperature readers in every facility
- Ensured every employee had a distanced personal work space
- Installed plexi-glass separators as needed to ensure safe spaces
- Restricted use of restrooms to one person at a time
- Restricted use of elevators to one person/family at a time
- Purchased technology equipment [i.e. laptops and iPads] to ensure every employee and family had a device
- Increased technology training
- COVID-19 Safety Plan for Staff, Children and Visitors
- COVID-19 Testing & Vaccination Tracking
- Enhanced cleaning, disinfecting, and sanitizing at all sites

Navigating COVID-19

As we pass the two-year pandemic mark, Program Operations consisting of Program Services and Center Operations has been successful keeping up with the current COVID-19 variants and protocols. LIHS implemented social distancing strategies in classrooms, mask-wearing for staff and children over 2, intensified cleaning and disinfection efforts, frequent hand-washing, modified drop-off and pick-up procedures, and daily health screenings. Staff were able to learn and adapt quickly because we obtained a variety of tools that allowed LIHS to continue to work collaboratively supporting the children and families.

All of the LIHS centers remained open to assist the families. This department facilitated meetings with the center staff prior to reopening classrooms to ensure that staff were aware of the regulations around classroom set up and that staff were clear on the guidelines and recommendations outlined in our Agency COVID-19 Prevention Strategies. ALL staff attended training regarding COVID-19 and each center continues to follow an Individual Center Safety Plan. As the centers gradually opened classrooms in phases, prior to bringing children on site, we had meetings to confirm the center had everything needed to ensure health and safety protocols. Staff from Program Operations were present on-site the first day of classes to provide support and technical assistance.

Staff attended training and webinars to enhance their knowledge as regulations, mandates and guidelines were fluid. Information was shared with the children, parents, and staff via zoom and in-person with consultants and student interns. On-site visits continued for support and monitoring, as well as virtual meetings to stay connected with the staff.

As the pandemic landscape continued to change, school definitely looked a little different forcing LIHS staff, children, and parents to navigate a new world of learning. With little life experience to make sense of the pandemic's abrupt changes, the children have been resilient during this COVID-19 pandemic. LIHS was able to provide access to some services including trauma, grief, mental health and self-care but unfortunately there are long wait lists to accommodate all the needs of our children, families and staff during this unprecedented time.

LIHS was also able to increase services to families, providing technology equipment for the children and parents, an online application process via our website, conducted telephone intakes, meals through our Grab n Go program as well as donations and supplies as needed. Despite the challenges and with tough times behind us the staff worked together to maintain consistency for the children and families to ensure a safe and successful school year.

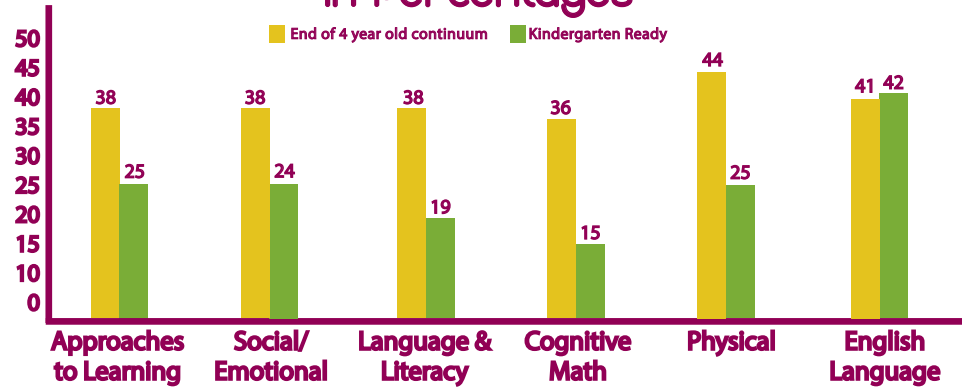


Preparing for Kindergarten

The DRDP – Desired Results Developmental Inventory is the tool used to measure child outcomes for all children in Early Head Start and Head Start. This tool provides a developmental continuum from infancy to Kindergarten. This continuum allows teachers to see where children are in each area of development and plan activities to help children reach the next level. Our children going to Kindergarten are well prepared for their next level of learning.



Kindergarten Readiness 2022 In Percentages



This chart shows all four year old children going to Kindergarten in Fall 2022. It is remarkable the number of ELL children who have reached the level of Kindergarten readiness, 83%. Children are Socially and Emotionally ready, despite the pandemic at 62%, The Approaches to Learning area, at 63% shows children are able to persist at a task, feel confident, have self-control and approach learning with a positive perspective. This is a great strength to have as they move on to a new environment.

Health & Wellness

- 131 Mental Health referrals.
- 86% HS children received a physical exam
- 73% HS children received a dental
- 99% are age appropriately immunized
- 6% of HS and EHS children need have rescue medications
- 100% of expectant Women received prenatal care
- 100% of EHS children have access to medical care on a continuous basis

Early Head Start

Early Head Start programs provide family-centered services for low-income families with very young children. These programs are designed to promote the development of the children, and to enable their parents to fulfill their roles as parents and to move toward self-sufficiency. Early Head Start centers provide 1,380 annual hours of classroom operations for forty-eight (48) weeks. Secure parent-child attachment is key to children's learning. EHS's mission is to support parent-child relationships through continuity of care.

Our EHS Services Manager participated in a yearlong training and received her Certification in The Program for Infant/Toddler Care (PITC), which promotes responsive, caring relationships for infants and toddlers. This certification recognizes her as trainers for infant/toddler teachers.

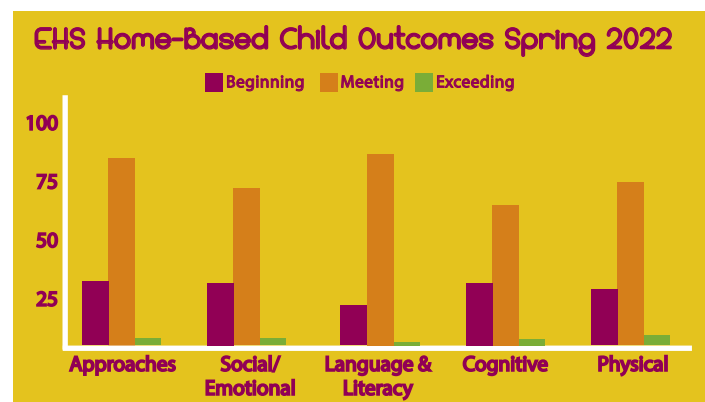
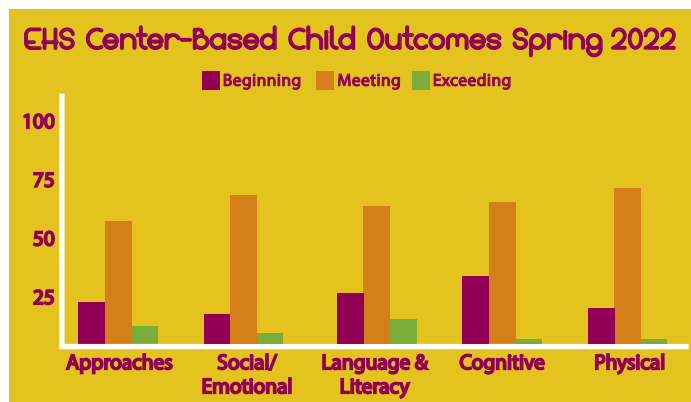
The Early Head Start program provides support to expectant mothers with prenatal education to ensure they have access to all the medical and other services they need to give birth to a healthy baby. Since learning begins at birth the Early Head Start program provides critical services to babies to age three when their physical, educational and social-emotional development start. Early Head Start's comprehensive approach provides babies and expectant mothers support to thrive good health, strong families, and positive early learning experiences. The EHS program provides a Home-Based option, which a full range of Early Head Start services are provided through weekly home



visits to each enrolled child and family. The home visitor provides child-focused visits that promote the parents' ability to support their child's development. Center-based services: Education and child development services are delivered primarily in classroom settings, which are located in an Early Head Start center. Staff members also visit family homes at least twice per year.

The Early Head Start program provided on-site and virtual services for 148 families throughout the COVID-19 pandemic.

The assessment reports cannot measure growth this year due to a variety of reasons related to the pandemic, but we can see from the spring progress report below that most of the children are on target and meeting expectations.



Early Head Start - Child Care Partnerships Program (EHS-CCP)

The Early Head Start-Child Care Partnerships Program (EHS-CCP) is funded for 98 Infants and Toddlers. Our five (5) EHS-CCP Partners include two (2) Group Family Day Care homes. Alicia's Day Care located in Shirley and New Beginnings Day Care Located in Brentwood. There are seventeen (17) children enrolled at these Partner Sites. The EHS-CCP Program has three (3) center-based childcare centers. Our Partners are Bay Shore Day Care Center, LTD, located in Bay Shore, Marks of Excellence Day Care Center, located in Amityville, and Story Book Hollow Children's Academy located in Selden, NY. There are ten (10) classrooms that serve eighty-one (81) children. Each EHS-CCP Partner Sites provides a maximum of ten (10) hours of services, for a minimum of 1,380 hours per year, forty-eight (48) weeks a year, recognizing families who are working, and/or in a job training program, require a full day of care. Parenting teens also require full-day services to graduate from high school in a timely fashion, secure internships and part time jobs to pursue higher education. "Wrap-around services" are available for early and late drop off and pick up times at EHS-CCP Partner Sites. This was intentionally designed to enhance the quality of childcare for infants and toddlers for a seamless full-day and full-year of comprehensive services.

In the 2021-2022 program year, the EHS-CCP program served over 146 children. Over twenty-six (26) transitioned into our Partner's preschool classrooms or to a Head Start Center. Our Family Service Workers facilitated and assisted over fifty-eight (58) families to obtain a Suffolk County Day Care Subsidy. The EHS-CCP program provided childcare to

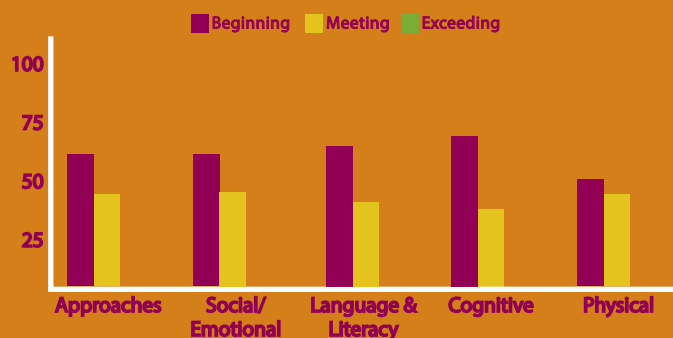
ninety-two (92) full time working parents and to eighteen (18) parents who are either in a job training program or who are back in school.

The EHS-CCP program had twenty-three (23) children diagnosed with a disability. These infants and toddlers were referred to the Suffolk County Department of Health for formal evaluations after the EHS-CCP Program Teachers and Infant/Toddler Service Workers screened the children using the Brigance Early Head Start Screen III screening tool and through their observations.

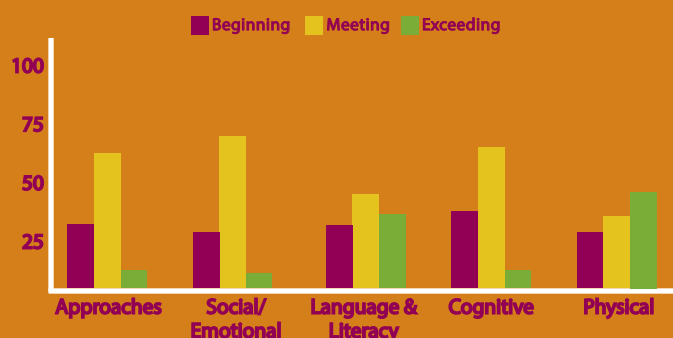
The EHS-CCP program collaborated with the Child Care Council of Suffolk's Infant Toddler Mental Health Consultation Program (ITMHC). During the COVID-19 pandemic parents and child care providers have noticed an increase in challenging behaviors. The ITMHC role is to provide support to teachers who care for the infants and toddlers in their child care programs. The ITMHC pairs a mental health professional with our EHS-CCP Partners: Bay shore Day Care and Marks of Excellence to help foster the social and emotional development of infants and toddlers birth to 36 month old. The goal of this early intervention practice are to prevent and reduce children's problem behavior and increase social skills, increase the teacher's capacity to promote the social and emotional development of each child and decrease teacher's stress and burn out.

This year the EHS-CCP Partners provided in-person services at the childcare centers and group family day care homes.

Infants Child Outcomes Spring 2022



Toddlers Child Outcomes Spring 2022



LIHS Wellness and Community Partnership Collaborations

- The Health and Disabilities Advisory Services Committee consisted of various local health professionals and agencies providing guidance and assistance with health-related topics affecting the Head Start and Early Head Start communities. The committee has been instrumental in providing input and suggestions for the LIHS COVID-19 Prevention Strategies.
- Cornell Cooperative Extension of Suffolk County and Dietetic students from Stony Brook University presented virtual Nutrition workshops for parents and LIHS staff in English and Spanish throughout the school year.
- Dietetic students from Stony Brook University assisted the centers with completing growth assessments. They also presented a virtual Body Mass Index presentation for the parents. Educational material was shared for parents and staff to help understand the importance of physical activity and BMI of the children.
- WIC representatives conducted virtual presentations for parents and Family Advocates/ Educators. LIHS continues to work closely with WIC personnel referring families for services.
- The Lions Club completed vision screenings for the children at different Early Head Start and Head Start centers.
- Molloy University completed various health screening and presented a variety of health lessons to the children at different Head Start centers.
- Stony Brook School of Dental Medicine completed oral health screenings at different Head Start centers. They also provided virtual oral health presentations for the children and parents. Oral health supplies (toothbrushes, timers, and toothpaste) for all Head Start children were donated by Suffolk Pediatrics, Henry Schein, Colgate, and the ADA Give Kids a Smile Team.
- LIHS participated in the "Give Kids a Smile Event" at the Long Island Aquarium and Exhibition center. Children who participated received a free dental screening, cleaning and fluoride treatment and free admission to the aquarium.
- The Child Care Council of Nassau received a grant Eat Well, Play Hard allowing a Registered Dietitian to conduct a number of workshops for the children, parents and staff at different Head Start centers.
- Fidelis Health Care was available to assist families with their health care needs and they also attended End-of-the-Year Moving up ceremonies to share health information with the families.
- Long Island Cares and Island Harvest provided assistance with food drop off at the centers with food pantries several times a year.
- Adelphi University provided virtual services as well as in-person services to the children, parents and staff in need. Mental Health consultant support services continued through 1:1 sessions, center meetings and training for the families as well as the LIHS staff.

Staff Advancement & Professional Development

LIHS continues to provide professional development opportunities for staff in a variety of ways. LIHS provides tuition stipends for staff who are furthering their education, working toward college degrees, and payment for FDC classes for Family Advocates as well as payment for CDA credentials for Classroom staff. Gaining these credentials allows staff to move up in the agency to other positions as they become available.

LIHS provides direct Professional Development to all staff through a variety of ways; Pre-Service and In-Service Training, Professional Development Days, conferences, coaching and 1:1 training with Content Area Specialists. All staff are provided CPR and First Aid training every two years to ensure the safety of children, families and staff.

Due to on-going COVID-19 concerns, we continue to provide most

professional development virtually. We have developed our skills in using the virtual platform to provide interactive trainings that allow staff to participate in virtual activities. This provides staff an opportunity to work in small groups, write responses, participate in polls, and play games in the training. Being able to provide a variety of activities helps staff learn and synthesize the concepts being taught and, in turn be able to apply what they have learned.

The Coaching Program provided 60 staff with on-going coaching opportunities. Staff participated in 1:1 coaching or CLASS Group Coaching (CGC). Staff in the CGC reported that their coaching experience helped them develop a deeper understanding of the CLASS dimensions, helped them improve their teaching strategies and became more comfortable with the CLASS Tool.



Parent Engagement

The Parent Involvement Department implements learning opportunities for families creating authentic partnerships that enhances the knowledge about the Head Start Program and its history. The staff planned and in collaboration with community partners afforded a variety of activities for children and their families. Through these partnerships the department creates opportunities and connects families to available resources in the communities Long Island Head Start serves.

Due to the pandemic protocols for safety, family engagement activities continued to be afforded virtually. Activities are planned to provide every parent of an enrolled child the opportunity to engage in the development of activities that address their interest and needs. These activities also support the educational and healthy development of their children. The activities for the program year began with the planning and conducting of the virtual center parent orientations which provided participants with detailed information about the services and expectations for the 2021-2022 program year. Some of the opportunities provided for parents to be engaged were the Center Parent Committee Chairperson meetings which included training opportunities. Training opportunities such as Parent Aide Volunteer in Education (PAVE), Abriendo Puertas/Opening Doors Parent Curriculum, Program Governance Training Series that included sessions such as ERSEA, Head Start Performance Standards Overview, Responsibilities of Governing Bodies, Effective Meetings, and COVID Protocols & New Regulations. These training opportunities were

afforded to all HS/EHS & EHS-CCP parents, staff members, policy council representatives, and board of directors' members adhering to HS Performance Standards.

The Parent Involvement Department provided support to families by partnering and collaborating with community-based organizations who believe and support the mission and vision of the agency. Some of these agencies are Fidelis Care, Flutterflies, Inc., Liga de Justicia Foundation, Axis Church, the Special Education Parent Advisory Council of the Brentwood School District, the Suffolk County Dental Society, Pronto, NY Project HOPE Association for Mental Health and Wellness and Island Federal among other community partners and agencies.

The Policy Council body continued to meet monthly as scheduled and be part of the agency's shared decision making. The Policy Council Chairperson was nominated and received a Father of the Year Award through the Fathers & Families Coalition of America. Another award presented this year was to Former Policy Council Chair Sally Brody who was presented with the Warrior Award by Flutterflies Inc.

Long Island Head Start staff members, policy council representatives, parents and community partners continued their collaboration and playing a significant role throughout the 2021-2022 program year. The department will continue to plan, create, and deliver quality services that will enhance parents' skills while providing them with the tools to reach self-sufficiency and to become the best advocates and ambassadors for their children and the Head Start program.

Agency Funding

Long Island Head Start's primary funding is obtained from the Department of Health and Human Services. The agency also receives funds from the State of New York Department of Health, Child and Adult Care Food Program and local school districts Universal Pre-Kindergarten Program(s). As a Grantee, LIHS is obligated to monitor what costs are allowable, necessary, and allocable, and document which are reported to the funding sources. All revenues are recorded monthly, and reports are submitted semi-annually, annually, and final. The agency is audited every year and the audit conducted complies with all government auditing standards and requirements under the Uniform Administrative Requirements, Cost Principles, Audit

Requirements for Health and Human Service Awards, and Single Audit. The audit includes an examination and review of our internal controls. All of LIHS' financial statements are open to the public upon request in our Website. Every three years the Agency is audited by the Federal Government and NYS Department of Health, Child, and Adult Care Food Program. The Audit Team complied with all the federal regulations and State regulations, such as major contracts, purchase of equipment, Davis Bacon, consultant standard procedures, fiscal policies and filing reports such as 941 and NYS-45.

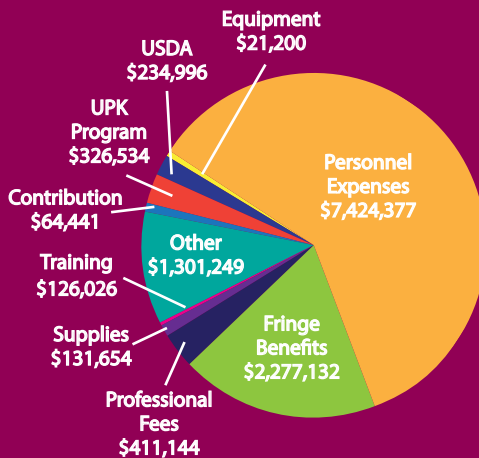
Alternate Funding Sources

The agency continues to aggressively pursue alternate funding sources to enhance the quality of its programs. To date, the agency has received grant awards from private foundations, New York State funds for the School District integrated by the Universal Pre-K program(s), member items and private businesses totaling approximately \$730,000.

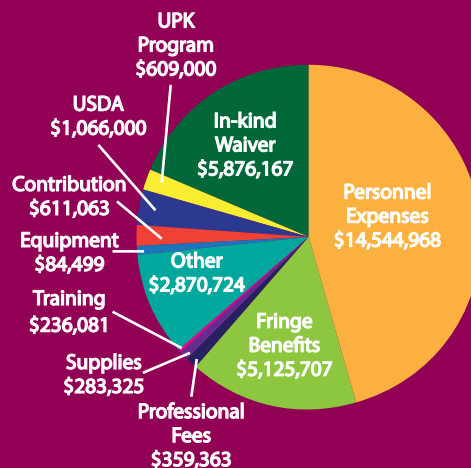
Non-federal Match In-kind Contributions

Long Island Head Start must raise 20% (5.8 million) of the sixteen-month budget to match the federal funding each year. This is 20% In-Kind raised through volunteer services, partnerships, donations, and cash contribution. Due to the COVID-19 crisis and lack of the community resources necessary, the agency may not be able to generate the required In-Kind matching contribution necessary to meet the requirements for this fiscal year ending in November 2022.

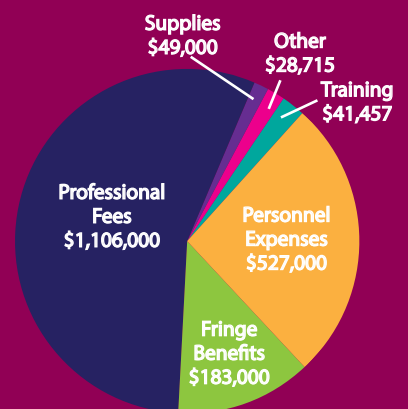
Head Start & Early Head Start
Total Budget 12/01/20-7/31/21
\$12,318,753



Head Start & Early Head Start
Total Budget 8/01/21-11/30/22
\$31,666,897



EHS-CCP
Total Budget 9/01/21-8/31/22
\$1,935,172









Health and Disabilities Services Advisory Committee Members

Nicole Vidiri Silva, Huntington District CSE, Chairperson

Jenny Andersson, LIU Early Childhood Family and Community Engagement Center

Zahrine Bajwa, Suffolk Cornell Cooperative Extension, Regional Project Director Long Island, Nutrition Health & Obesity Prevention Program

Lauren Brand, Stony Brook WIC Program, Director

Elizabeth Collins, Stony Brook University, Clinical Assistant Professor Director

Danielle Durkin, William Floyd SD UPK PNP-BC, RN

Barbara Falkman, Suffolk County Dept of Health, Public Relations Specialist

Kerry Hosek, The Children's Community HS B-5, Assistant Director

Elizabeth Ianno, Speech Pathologist, LIHS Consultant

Joaniko Kohchi, Adelphi-Institute for Parenting and Postgraduate Certificates in Infant, Child, & Adolescent Psychotherapy, Director

Alexandra Kranidis, Asthma Coalition of LI, Educator

Stacy Kurtz, Adelphi, Assistant Director

Christine Marsh, Stony Brook Dental, Training Coordinator

Kammy McLoughlin, Stony Brook University, Clinical Assistant Professor

Stacy Morgan, CISD UPK, Disabilities Services Specialist

Karen Pastore, DDI, Education Manager

Barbara Pirnat, Variety Children Learning Center, Director of EI, SEIS, Related Services, Evaluations and Placement

Sofia Porres, Stony Brook SPARC program, Project Coordinator

Christine Reilly, Community Program Center, PJ Center Director/B-5 Health and Nutrition Manager

Rhona Sherwin, Stony Brook Dental, D.D.S Clinical Professor and Director of Pediatric Outreach

Marian Silverman, Community Psychologist

Arleen Steckel, Stony Brook University, Consultant

David Tellerman, New York Therapy Placement Center, Director of Business Development Birth- 5 Years

Sheila Ventrice, Suffolk County Division of Services for Children with Special Needs, Director

Amanda Wisniewski, Speech Pathologist, LIHS Consultant

Michelle Wruck, Molloy, Clinical Adjunct Professor of Nursing

Board of Directors & Management Staff

Officers

Terrence D. Goode, Chair
Martha A. Parry, Co-Chair
Kathleen Cafaro, Treasurer
BrendaJoyce H. Scott, Secretary

Board Members

Terrence D. Goode, Chairman of the Board
Martha A. Parry, Co-Chair
Kathleen Cafaro, Treasurer
BrendaJoyce H. Scott, Secretary
Rosario Amaya
Atiya Batts
Toni Dean
Michael Fields
William G. Ford, Esq.
Dr. Michelle Cummings Fowler
Regina Hunt
Dean S. Kupinsky
Maria Milazzo
Lovetta Nixon
Carlos Ramos
Magali Roman
Lisa McQueen-Starling

Policy Council Officers

Jimmie Smiley, Chair
Danielle LaPorta, Co-Chair
Michael Murphy, Treasurer
Carmen Rivera, Secretary

CEO/Executive Director

Debrah Everett-Garcia, HS/EHS & EHS-CCP Programs

Senior Management

Elsa Cruciani, Director of Finance
Diane Eppolito, Director of Quality Assurance
Ana Figueroa, Director of Parent & Community Engagement
Annette Harris, Director of Program Operations
Arlene Lacey, Director of Human Resources
Dawn Melchiona, Director of Infant/Toddler Services

HS/EHS Center Managers

Kelly Cerney, Central Brookhaven EHS Center
Kristina Foster, Riverhead HS Center
Karen Gibson, Bridgehampton HS Center & Bridgehampton @ CMEE
Diane Guzman, Wyandanch HS Center
Cindy Henderson, Central Brookhaven HS Center, Central Brookhaven @DDI
Lina Ortiz, Southampton HS Center
Maria Ortiz (Acting), Bay Shore HS Center
LaNea Overton, Islip EHS Center
Kenya Pair-Woods, Huntington Center, DDI Center, E. Northport HS Centers
Stephanie Reidy (Acting), Patchogue HS Center
Nicklande Regis, Patchogue EHS Center
Carol Smith, Bay Area HS Center
Pauline Smith, North Fork HS Center
Tanika Steele, Bellport HS Center
Christina Vittorato, Central Islip & Brentwood HS Centers
Belinda Whitehead, Amityville HS Center & Amityville @MOE



Debrah A. Garcia, Chief Executive Officer

Central Administration: 98 Austin Street, Patchogue, New York 11772

www.liheadstart.org / info@liheadstart.org / (631) 758-5200



Head Start & Early Head Start Centers

Amityville HS Center
48 Cedar Road
Amityville, NY 11701
Phone (631) 842-8484

Amityville HS Center @ MOE
455 Albany Avenue
Amityville, NY 11701
Phone (631) 842-8484

Bay Area HS Center
161 Margin Drive
Shirley, NY 11967
Phone (631) 395-4853

Bay Shore HS Center
107 E. Main Street
Bay Shore, NY 11706
Phone (631) 666-4985

Bellport HS Center
189 North Dunton Avenue
East Patchogue, NY 11772
Phone (631) 286-0579

Brentwood HS Center
177 Wicks Road
Brentwood, NY 11717
Phone (631) 951-3043

Bridgehampton HS Center
551 Sag Harbor Turnpike
PO BOX 1851
Bridgehampton, NY 11932
Phone (631) 537-2514

Bridgehampton HS Center @
CMEE
376 Sag Harbor Turnpike
PO BOX 316
Bridgehampton, NY 11932
Phone (631) 468-8421

Central Brookhaven HS Center
2884 Route 112
Medford, NY 11763
Phone (631) 732-7100

Central Brookhaven HS Center
@DDI
1 Scouting Blvd
Medford, NY 11763
Phone (631) 732-7100

Central Islip HS Center
44 Toomey Road
West Islip, NY 11795
Phone (631) 348-1816

East Northport HS Center
203 Cedar Road
East Northport, NY 11731
Phone (631) 486-6819

Huntington HS Freedom Center
159 Railroad Street
Huntington Station, NY 11746
Phone (631) 421-5058

Huntington HS Center @ DDI
25 Little Plains Road
Huntington, NY 11743
Phone (631) 266-4428

North Fork HS Center
1850 Main Bayview Road
Southold, NY 11971
Phone (631) 765-5684

Patchogue HS Center
20 Church Street
Patchogue, NY 11772
Phone (631) 654-5010

Riverhead HS Center
536A St. John's Place
Riverhead, NY 11901
Phone (631) 953-6945

Southampton HS Center
271 Flanders Road
Riverhead, NY 11901
Phone (631) 369-7730

Wyandanch HS Center
28 Washington Avenue
Wyandanch, NY 11798
Phone (631) 643-5453

Wyandanch HS Center @ AFC
600 South Service Road
Dix Hills, NY 11746
Phone (631) 643-5453

Central Brookhaven EHS Center
2884 Route 112
Medford, NY 11763
Phone (631) 345-2442

Islip EHS Center
177 Wicks Road
Brentwood, NY 11717
Phone (631) 968-1960

Patchogue EHS Center
10 Church Street
Patchogue, NY 11772
Phone (631) 207-5712



Early Head Start - Child Care Partnership Centers

Alicia's Day Care
386 Rowlinson Drive
Shirley, NY 11967
(631) 772-2880

Bay Shore Day Care
107 East Main Street
Bay Shore NY 11706
(631) 647-4326

Marks of Excellence
455 Albany Avenue
Amityville, NY 11701
(631) 789-0800

New Beginnings Day Care
132 Hilltop Drive
Brentwood, NY 11717
(631) 305-9337

Story Book Hollow
38 Adirondack Drive
Selden, NY 11784
(631) 698-5900